

EcoStruxure Building Operation

Oracle Opera Integration

SmartConnector

Installation & User Guide

04-20018-02-en
December 2020



Life Is On

Schneider
Electric

EcoStruxure Building Operation

Oracle Opera Integration
SmartConnector

Installation & User Guide

04-20018-02-en
December 2020

Life Is On

Schneider
Electric

Copyright © 2019 Schneider Electric. All rights reserved.

The Schneider Electric brand and any registered trademarks of Schneider Electric Industries SAS referred to in this guide are the sole property of Schneider Electric SA and its subsidiaries. They may not be used for any purpose without the owner's permission, given in writing. This guide and its content are protected, within the meaning of the French intellectual property code (Code de la propriété intellectuelle français, referred to hereafter as "the Code"), under the laws of copyright covering texts, drawings and models, as well as by trademark law. You agree not to reproduce, other than for your own personal, non-commercial use as defined in the Code, all or part of this guide on any medium whatsoever without Schneider Electric's permission, given in writing. You also agree not to establish any hypertext links to this guide or its content. Schneider Electric does not grant any right or license for the personal and non-commercial use of the guide or its content, except for a non-exclusive license to consult it on an "as is" basis, at your own risk. All other rights are reserved.

Trademarks and registered trademarks are the property of their respective owners.

Contents

1	Functional Overview	6
2	Restrictions & Limitations	7
2.1	SmartConnector Service Version.....	7
2.2	EWS Supported Systems	7
2.3	Oracle Opera Supported System.....	7
3	Installation	8
4	Configuration & Settings.....	9
4.1	Processor Configuration	9
4.2	Adding the Custom Assembly to the Service	10
5	Revision History	17
6	References.....	18

1

Functional Overview

The Oracle Opera PMS system interface is a middleware application that enables communication between Oracle Opera applications with EcoStruxure Building Operation via EcoStruxure Web Services (EWS). Each room in the PMS is represented in the EcoStruxure Building Operation model of the PMS. PMS attributes configured in the interface may be used to implement custom sequences. A multi-state value indicates the number of persons checked into a room as well as information for the guest name, language and expected departure date. The interface can fully represent items in the PMS system with data synchronisation between the two systems. This ensures the SmartConnector database is maintained and kept up to date without any user intervention.

The processor leverages the SmartConnector Service framework and details of the application (release history, installation notes etc.) are available separately and are not covered in this manual.

The SmartConnector application is licensed on a single server basis but may also be configured to connect to both Automation Server (AS-P) devices as well as Enterprise Servers (ES).

2 Restrictions & Limitations

2.1 SmartConnector Service Version

The processors have been configured to operate with the SmartConnector version 2.3, use with any other version of the SmartConnector framework is not supported.

2.2 EWS Supported Systems

The processors can support EcoStruxure systems operating with the EcoStruxure Web Services (EWS) protocol v1.1 and v1.2.

2.3 Oracle Opera Supported System

The SmartConnector has been tested and validated against the Fidelio Interface Application Specification v2.20.3

Other versions may cause issues and are not supported. Please check with your supplier.

3 Installation

Please refer to the SmartConnector Installation and Configuration Guide.pdf for guidance on SmartConnector installation.

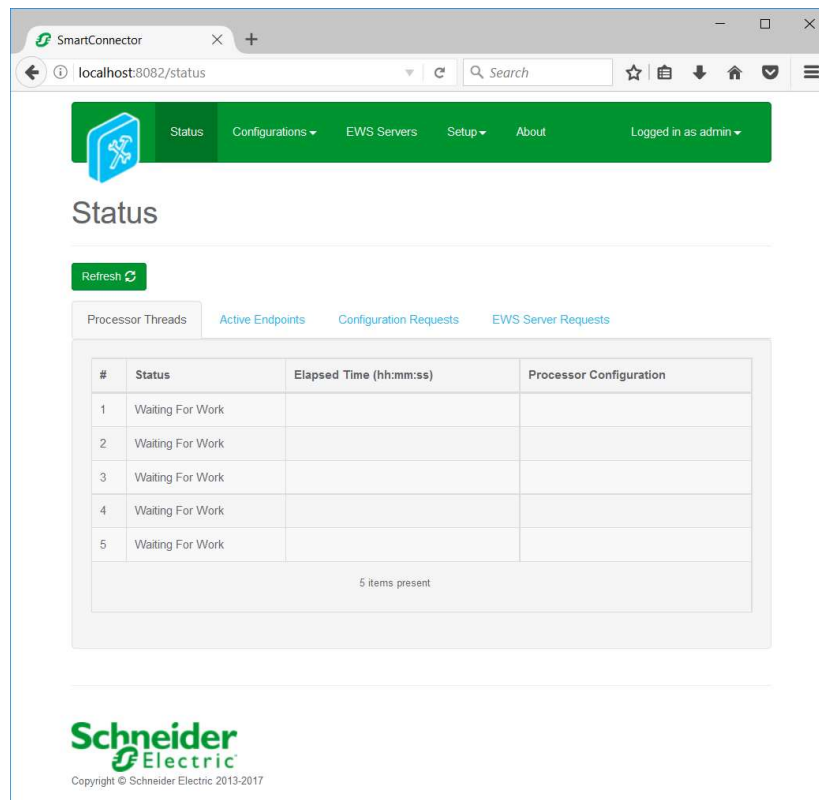
To deploy the Oracle Opera assembly copy the files “ISC.FiasProtocol.dll”, “ISC.Micros.dll” and “ISC.PmsSql.dll” into the service installation directory. Normally “C:\Program Files (x86)\Schneider Electric\SmartConnector”

4 Configuration & Settings

4.1 Processor Configuration

With a default installation of SmartConnector, the configuration pages for the server can be reached at the following address on the server the service has been installed on:

<http://localhost:8082/>

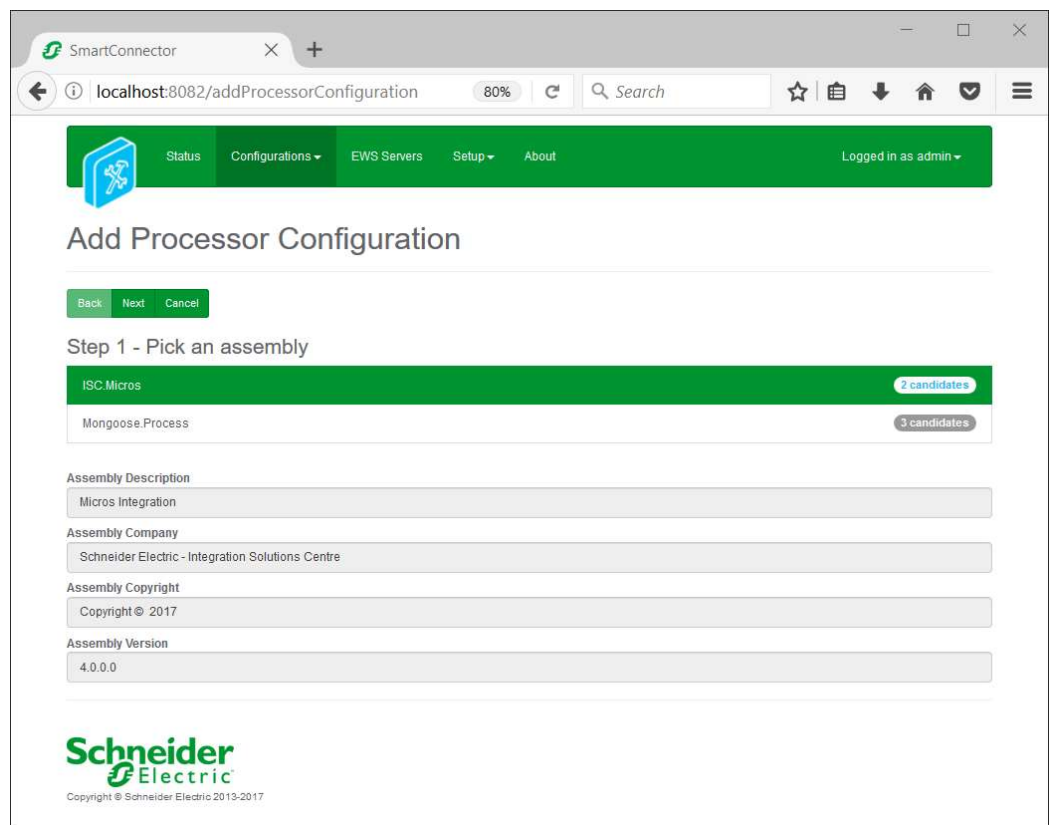


4.2 Adding the Custom Assembly to the Service

Switch to the Configurations tab and select Add New +



At the Add Configuration window, Step 1 – Pick an assembly, select the reference to ISC.Micros (this will be highlighted green when selected)



Select Next and proceed to Step 2 Choose a Class

Ensure the class ISC.Micros.InterfaceProcessor is selected first

ISC.Micros.InterfaceProcessor

Select Next and proceed to Step 3 Name Configuration

Enter a meaningful name and description for the Processor which will enable you to identify this process in the configuration window later.

Select Finish and proceed to the Configuration screen.

The screenshot shows a web browser window with the URL `localhost:8082/processorConfiguration?id=4`. The page title is "Processor Configuration". The interface includes a navigation bar with "Status", "Configurations", "EWS Servers", "Setup", and "About" tabs, and a "Logged in as admin" indicator. Below the navigation bar, there are several action buttons: "Edit All", "Start", "Validate", "Reset Counter", and "Reset Timer". The main configuration area has two input fields: "Name" (containing "Micros Interface Processor") and "Is Active" (set to "True"). A "Description" field contains the text: "Create connection with PMS to request and receive data. Send heartbeat and Update last connection time." Below this, there are tabs for "Processor", "Details", "Control", "History", and "Schedule". The "Details" tab is selected, showing a list of configuration fields with their current values: "Class Name" (ISC.Micros.InterfaceProcessor), "Assembly File" (ISC.Micros.dll), "Assembly Description" (Micros Integration), "Assembly Company" (Schneider Electric - Integration Solutions Centre), "Assembly Copyright" (Copyright © 2017), and "Assembly Version" (4.0.0.0). The Schneider Electric logo and copyright notice are visible at the bottom of the page.

In the configuration window select the Details Tab, you will then be presented with the screen to enter the configuration information. Much of the configuration has default options however they should be checked and validated for the installation. Edit the applicable fields as follows.

IP Address and Port Number

These properties should be set to Server's IP Address and Port Number respectively to establish connection with Micros server.

Read Write Time Out

This property is to set amount of time (in milliseconds) that Read and Write operations block waiting for Data.

Heartbeat Mins

This property is to set the interval (in minutes) between Heartbeat messages.

Cache Message Expiry Duration Minutes

This property is to set the duration of a message held in Cache before it expires.

Cache Write Sleep Time

This property is to set the time interval (in milliseconds) that Cache waits before processing the next message.

PMS Connection Retry Interval

This property is to set the time interval (in seconds) between connection retries to PMS.

In the configuration window select the Control Tab, you will then be presented with several options to define the Processor's default behavior. It is recommended to set the following;

Runs On Start – Yes (To enable the Processor to automatically start with the machine)

Runs On Schedule – Yes (Although this processor should never terminate, attaching a short cycling schedule will ensure that if it stops unexpectedly, it will attempt to auto restart on the schedule.)

Manually Startable – Yes (To allow a user to start through the configuration window)

Manually Stoppable - Yes

The Save Button allows the process configuration to be saved to the database.



A complete configuration will appear as follows:

Expand All Collapse All

Details

- Port Number *
5040
- Ip Address *
127.0.0.1
- Read Write Time Out *
2000
- Heartbeat Mins *
1
- Cache Message Expiry Duration Minutes *
30
- Cache Write Sleep Time *
1
- Pms Connection Retry Interval *
5

Follow the same procedure to configure the second Processor.

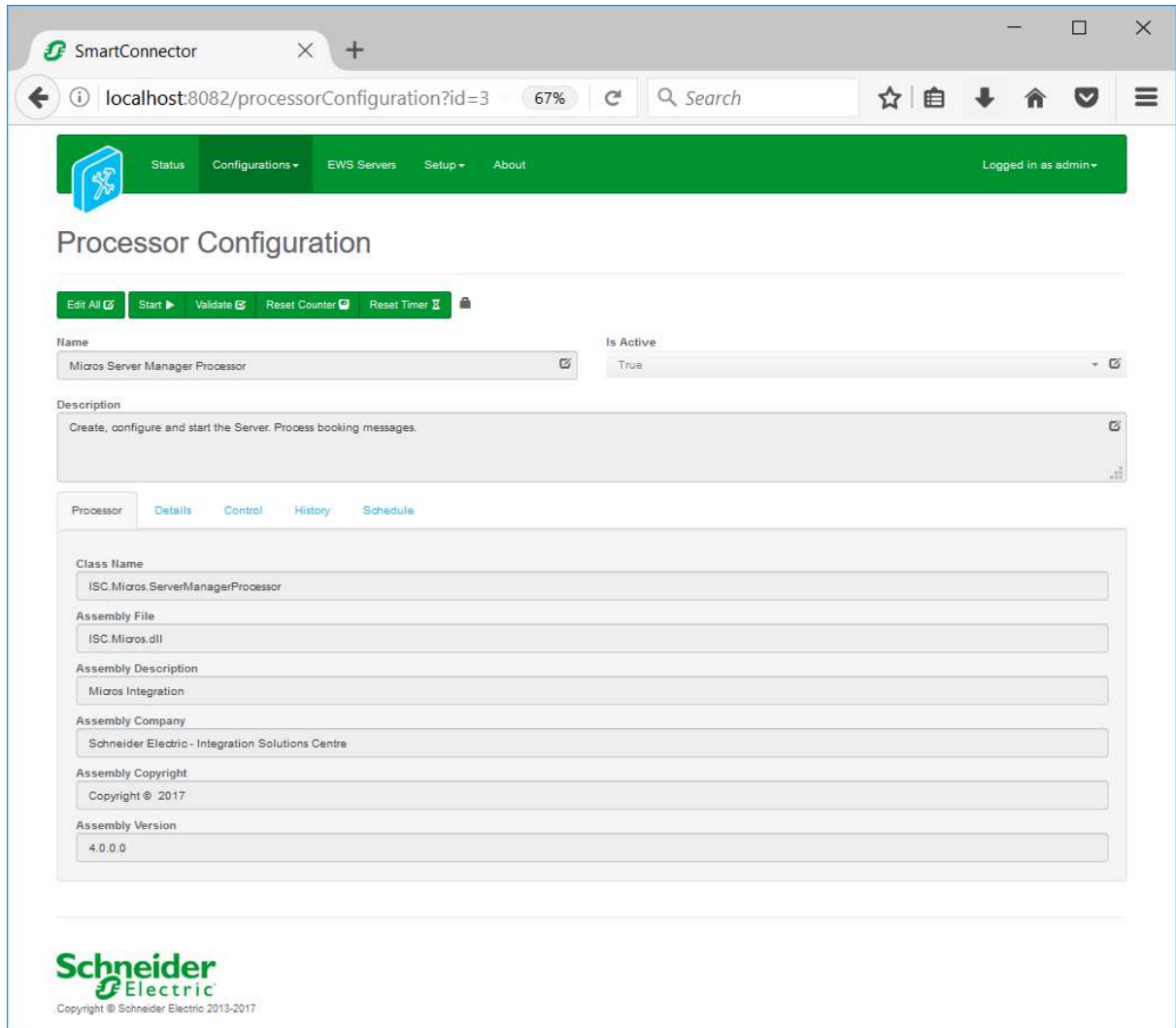
Ensure the class `ISC.Micros.ServerManagerProcessor` is selected

`ISC.Micros.ServerManagerProcessor`

Select Next and proceed to Step 3 Name Configuration

Enter a meaningful name and description for the Processor which will enable you to identify this process in the configuration window later.

Select Finish and proceed to the Configuration screen.



In the configuration window select the Details Tab, you will then be presented with the screen to enter the configuration information. Much of the configuration has default options however they should be checked and validated for the installation. Edit the applicable fields as follows.

User Name

This property is required to allow the EWS server connection to be authenticated.

Password

As above, this is the password related to the user credentials.

Server Address

This property is should be set to the full address required to access the EWS Server being hosted. This is normally in the case of a StruxureWare ES or AS device as follows:

[http://<IPADDRESS>:<PORT\(8093\)>/EcoStruxure/DataExchange](http://<IPADDRESS>:<PORT(8093)>/EcoStruxure/DataExchange)

***Note that the address is case sensitive!**

Server Name

This property is just a friendly text name field to allow you to easily identify the specific Endpoint you are configuring.

Checkout Time

This property is just a default Date Time field to allow you to specify a checkout Time of your preference.

Room Text

This property is just a friendly text name field to allow you to identify the specific property you are configuring.

Occupied

This property is just a friendly text name field to allow you to identify the specific property you are configuring.

Departure Date

This property is just a friendly text name field to allow you to identify the specific property you are configuring.

Guest Name

This property is just a friendly text name field to allow you to identify the specific property you are configuring.

Guest Language

This property is just a friendly text name field to allow you to identify the specific property you are configuring.

Folder Text

This property is just a friendly text name field to allow you to identify the specific property you are configuring.

In the configuration window select the Control Tab, you will then be presented with several options to define the Processor's default behavior. It is recommended to set the following:

Runs On Start – Yes (To enable the Processor to automatically start with the machine)

Runs On Schedule – Yes (Define a schedule that determines how often the server is updated with messages received from the PMS – Suggested value would be 15 seconds)

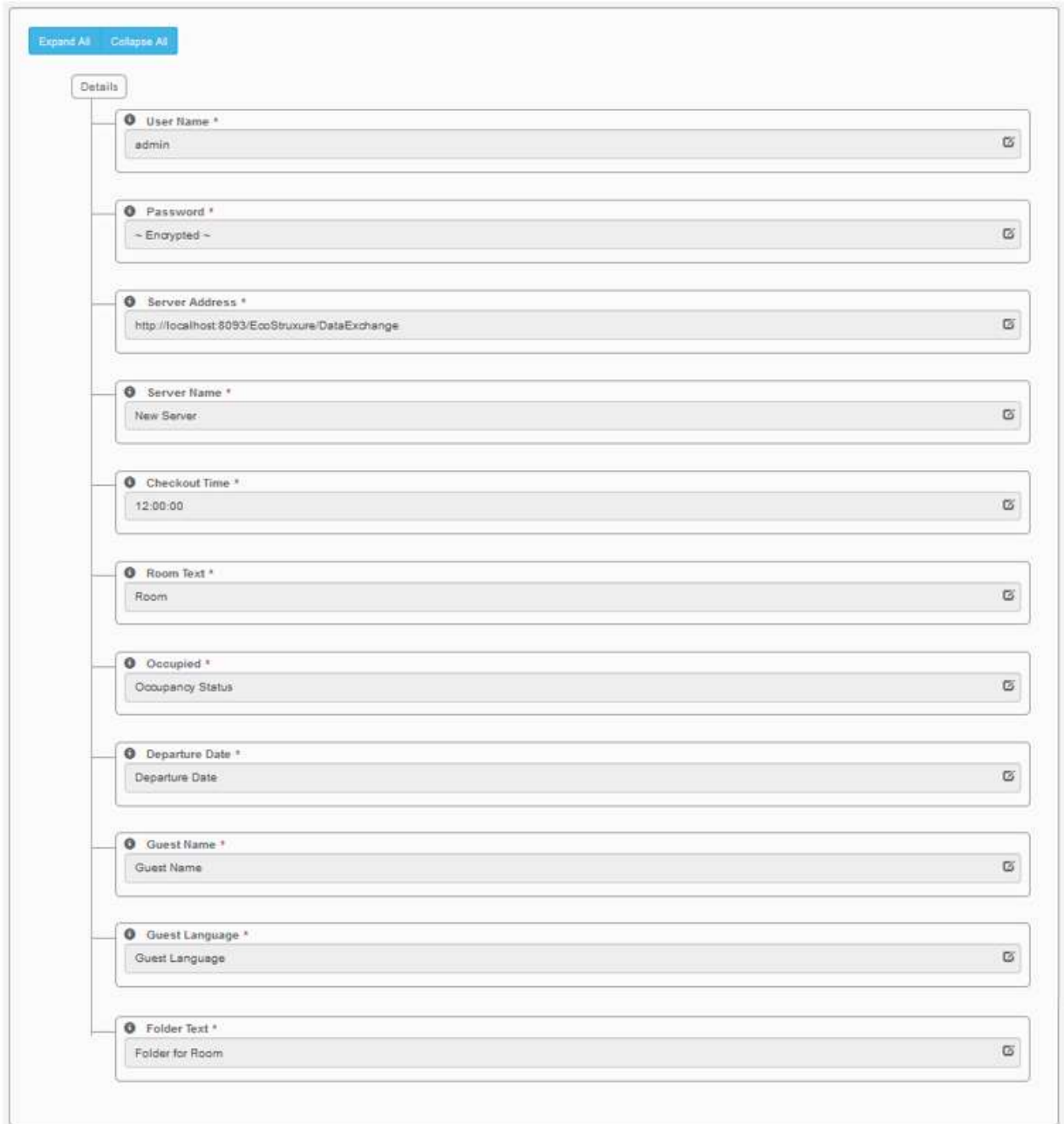
Manually Startable – Yes (To allow a user to start through the configuration window)

Manually Stoppable – Yes

The Save Button allows the process configuration to be saved to the database.



A complete configuration will appear as follows:



The screenshot shows a configuration interface with a 'Details' section. At the top left, there are two buttons: 'Expand All' and 'Collapse All'. The 'Details' section contains the following fields:

- User Name ***: admin
- Password ***: ~ Encrypted ~
- Server Address ***: http://localhost:8093/EcoStruxure/DataExchange
- Server Name ***: New Server
- Checkout Time ***: 12:00:00
- Room Text ***: Room
- Occupied ***: Occupancy Status
- Departure Date ***: Departure Date
- Guest Name ***: Guest Name
- Guest Language ***: Guest Language
- Folder Text ***: Folder for Room

System Tree

- Micros
 - Micros Fidelio Server
 - Room 30
 - RoomED
 - RoomGL
 - RoomGN
 - RoomOCC
 - Room 31
 - Room 32
 - Room 33
 - RoomED
 - RoomGL
 - RoomGN

Room 33

List View Properties

Quick filter

Name	Description
RoomED	Unoccupancy Date
RoomGL	Guest Language
RoomGN	Guest Name
RoomOCC	Occupied

5 Revision History

Version	Assembly File Details	Date
1.0.0.0	ISC.FiasProtocol.dll	15 th May 2018
4.0.0.0	ISC.Micros.dll	15 th May 2018
1.0.0.0	ISC.PmsSql.dll	15 th May 2018

Assembly files required:

ISC.FiasProtocol.dll

ISC.Micros.dll

ISC.PmsSql.dll

6 References

SmartConnector Installation and Configuration Guide.pdf
(TDS-M-INSTALLCONFIG-US.BU.N.EN.12.2017.2.30.CC)

SmartConnector Version 2.2 Release Notes.pdf
(TDS-M-RELEASENOTES-US.BU.N.EN.12.2017.2.30.CC)

Schneider Electric

www.schneider-electric.com/buildings

© 2019 Schneider Electric. All rights reserved.

04-20018-02-en

December 2020