

# Oracle Opera

## SmartConnector Extension

### Introduction

The Oracle Opera Smart Connector Extension is a middleware application that enables communication between the Oracle Opera guest management system application with EcoStruxure Building Operation via EcoStruxure Web Services (EWS).

### Features and Benefits

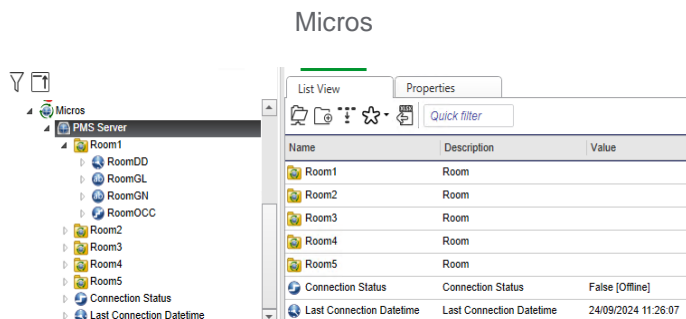
Each room in the PMS is represented in the EcoStruxure Building Operation model of the PMS. PMS attributes configured in the interface may be used to implement custom sequences for guest room control. The interface can fully represent items in the PMS system with data synchronization between the two systems. This ensures the database is maintained and kept up to date without any user intervention.

### Guest Arrival

A multi-state value indicates the number of persons checked into a room to provide the Occupancy number. Check-in notification received from the PMS can be used to pre-cool the room while the Guest is at the reception. Upon the guest checking out, PMS sends a Check-out notification that could be used to initiate the setback mode.

### Guest Name and Language

Using the language defined in the PMS for the checked-in guest, localization of the SE8000 Room Controller can enable the device to be set-up for the guest language preferences to optimize guest satisfaction. It is also possible to obtain the Guest name from the PMS and use it to display a welcome message on the SE8300 room controller.



### Guest Departure Date

With knowledge of when the room is unoccupied or unrented, energy savings can be optimized by putting the room into a setback mode or energy savings control.

### Supported Operating Systems

The following is a list of Operating Systems which the SmartConnector framework has been tested against. Non-listed operating systems capable of running .NET 4.5 should also work but their compatibility has not been verified.

- Windows 10 64 bit.
- Windows Server 2008 64 bit or greater.

### Supported Database Servers

The following is a list of Microsoft SQL Servers which SmartConnector has been tested against. Non-listed servers compliant with Microsoft SQL Server may also work but their compatibility is not guaranteed.

- Local DB.
- Microsoft SQL Server 2012 Express or greater.
- Microsoft SQL Server 2012 or greater.

### Project References

- SkyCity, Adelaide; 120 Rooms